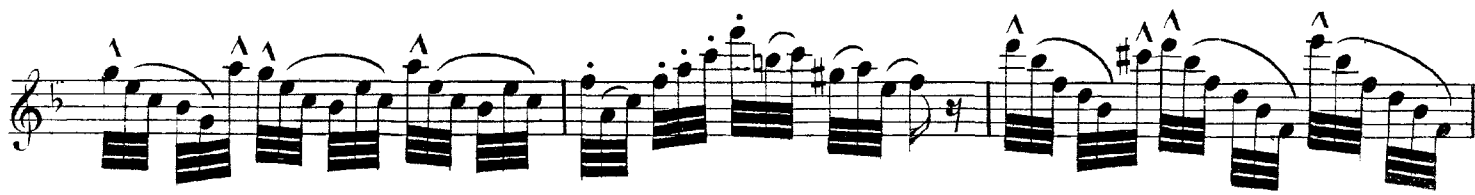
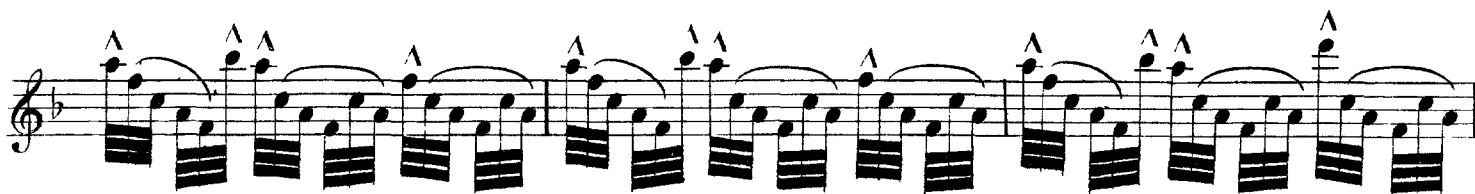
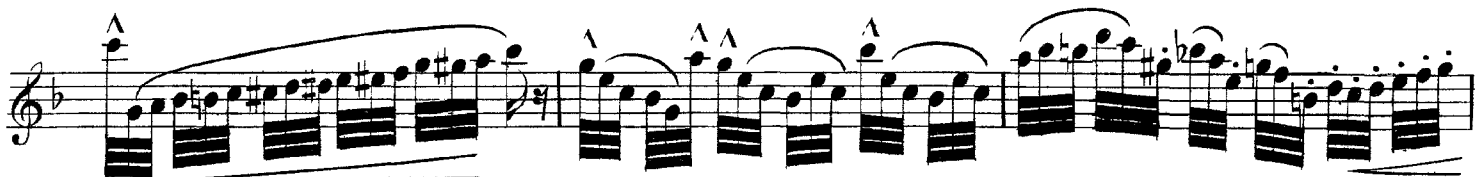
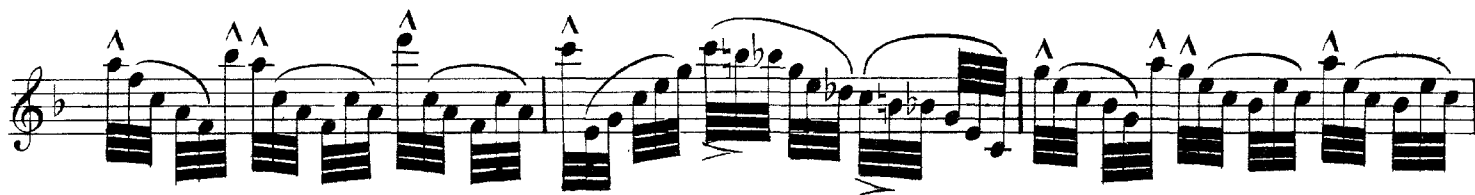
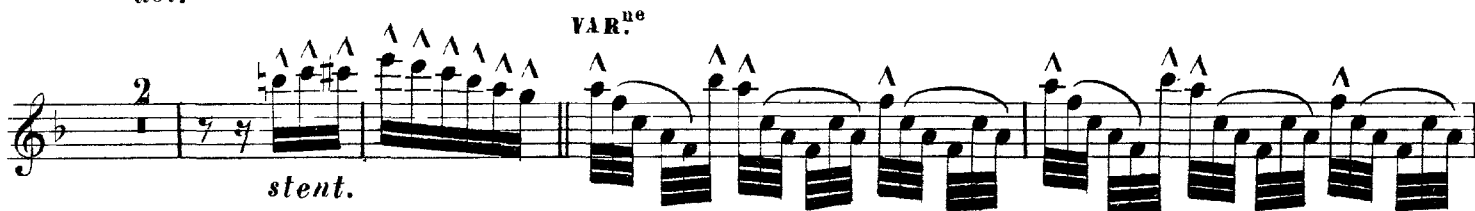


Giuseppe Verdi
La Traviata
Flute

Allegro



And.^{te} Mod.^{to}



The image displays a ten-staff musical score for the Flute part in Verdi's opera La Traviata. The notation is written on a grand staff (treble clef) with a key signature of one flat (B-flat major or D minor). The score includes various musical markings such as accents (^), slurs, and trills (tr). The tempo marking *a tempo.* appears on the third staff, and the instruction *ritard.* appears on the second staff. The piece concludes with a final measure containing a fermata and a first ending bracket labeled '1'.

D 36243 D

The image displays a single-staff musical score for the Flute part in Verdi's opera La Traviata. The score is written on ten staves of music. It begins with a treble clef and a key signature of one flat (B-flat). The first staff includes a *ritard.* marking and several trills (*tr*). The second staff continues with more trills and slurs. The third and fourth staves feature complex, rapid passages with many slurs and some rests. The fifth and sixth staves show further melodic development with slurs and rests. The seventh staff contains two *ff* (fortissimo) markings. The eighth and ninth staves include accents (*^*) over notes. The final staff concludes the piece with a final note and a fermata.